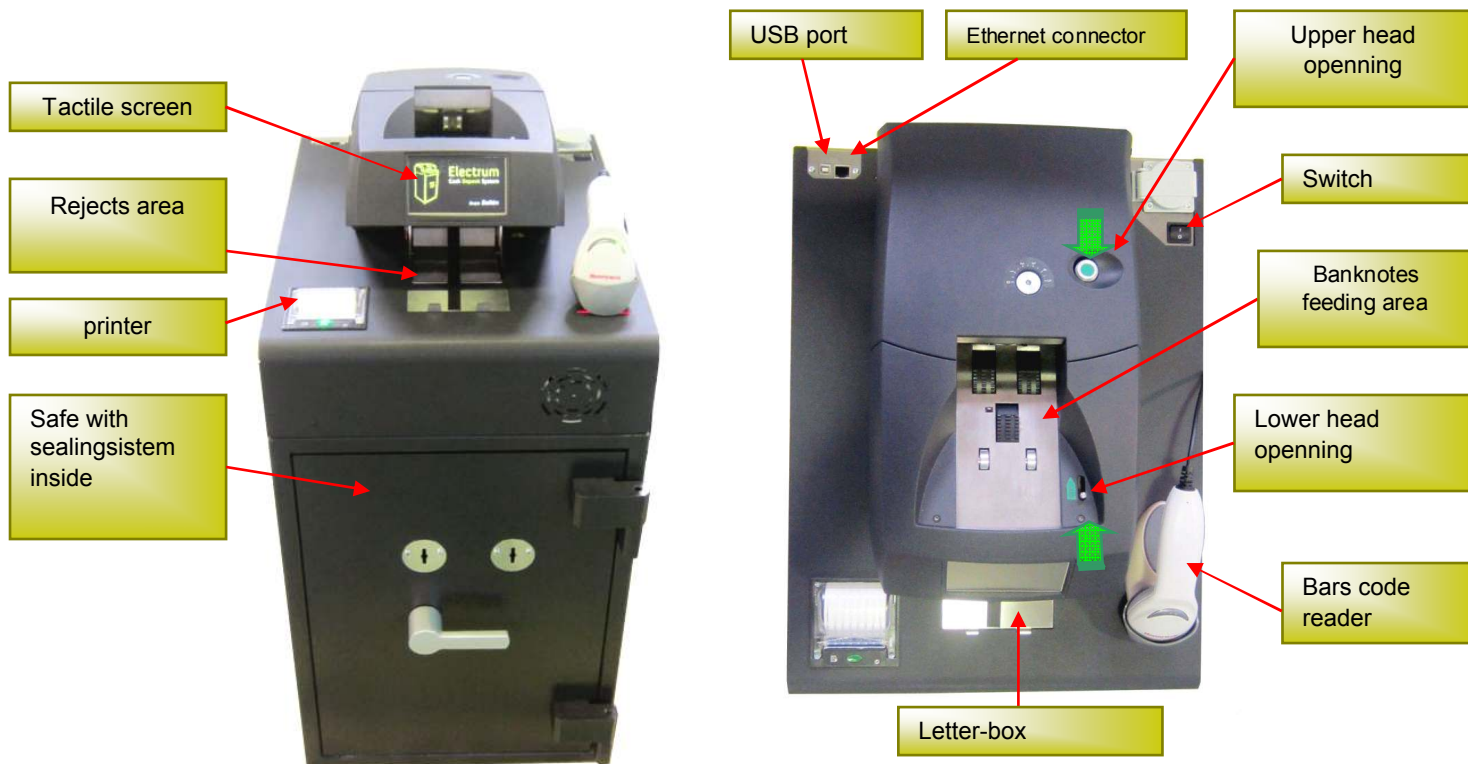
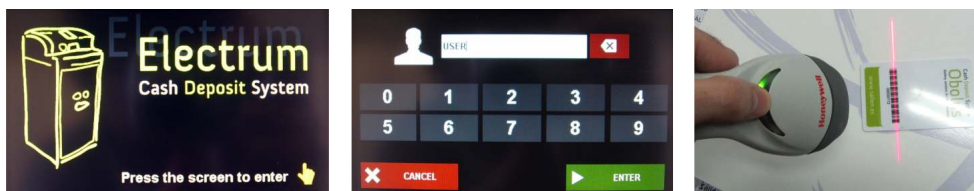


## DESCRIPTION



## Operating mode:

**1- IDENTIFICATION** introduce the operator identification code using the keyboard in the screen and press “enter”. It is necessary to be identified before every deposit. It is also possible to identify with a bar code.



**2- DEPOSIT** Place the banknotes in the feeder area. Check previously that there are no folded banknote nor estrange elements like paper clips. Press “start”.

When a banknote is not authenticated, it is sent to the rejects area and it is not taken into account. Check this banknote and introduce it again through the feeder area after checking it has a good appearance (not broken or folded).

Press “finish” when all the deposit is done.

⚠ If after a minute any banknote is deposited, the acceptor ends the deposit and goes to the main screen.



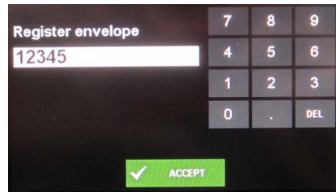
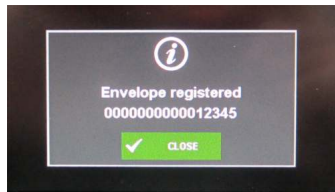
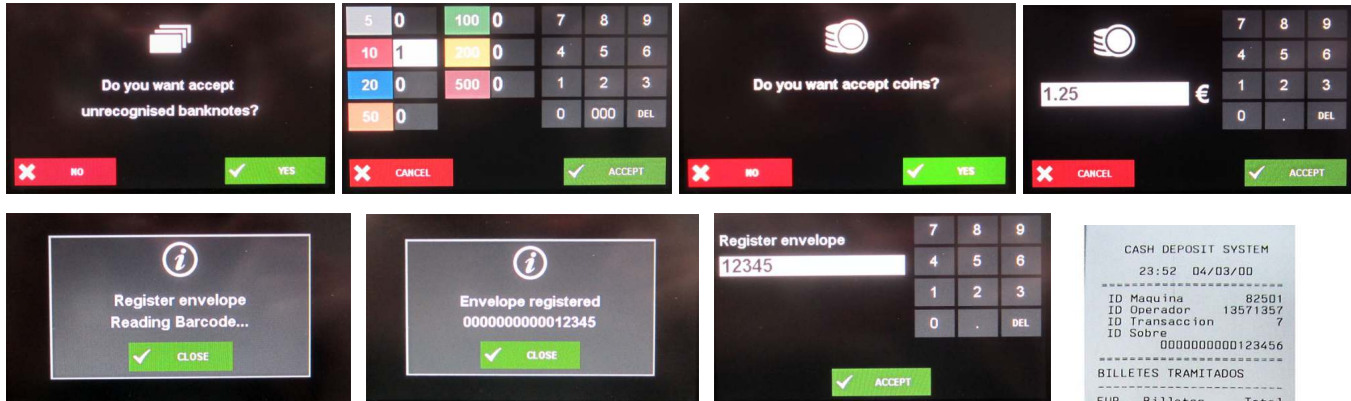
Prepare the banknotes before feeding them

Do not force the banknotes feeding

**3 – NO PROCESSED BANKNOTES / COINS** It is possible to deposit banknotes or coins directly into the bag with and envelope. After making a deposit, the machine asks the user if there are not processed banknotes. If so, press “yes”. Select then the banknotes and indicate the quantity of each denomination. (Press first on the banknote picture and later the quantity). After that, the machine asks if there are coins. Introduce on the keyboard the total the total coins sum.

Place the banknotes and/or the coins in an envelope with barcode. Read it with the bar code reader and one it has been recognized, insert it through the letter-box.

It is also possible to introduce the bar code with the keyboard. For that, press “cancel” and introduce the code.



CASH DEPOSIT SYSTEM		
23:52 04/03/00		
ID Maquina	82501	
ID Operador	13571357	
ID Transaccion	7	
ID Sobre	0000000000123456	
BILLETES TRAMITADOS		
EUR	Billetes	Total
5	2	10
10	3	30
20	5	100
Cantidad total:		140
N. de billetes:		10
BILLETES NO TRAMITADOS		
EUR	Billetes	Total
50	1	50
Cantidad total:		50
N. de billetes:		1
MONEDAS		
Cantidad total:		4,75
TOTAL		
Cantidad total:		194,75

**4 – TICKET** After carrying out a deposit, a ticket with the operation details is automatically printed.

The ticket shows the following data:

- Deposit data and time
- Machine and operator identification.
- Envelope code.
- Quantity and denomination of the deposited banknotes.
- Not processed banknotes quantity.
- Coins quantity.
- Total

**Changing the printer paper:**

A jam can occur when a folded banknote has been introduced, or if several banknotes have entered at the same time. When a jam occurs, do not deposit more banknotes and follow the instructions in the screen:

- 1<sup>st</sup> Remove the banknotes from the feeder and reject areas.
- 2<sup>nd</sup> Open the upper head and remove the banknotes inside. Close the upper head.
- 3<sup>rd</sup> Open the lower head and remove the banknotes. Close the lower head.
- 4<sup>th</sup> Jam in the back area. Open the back and remove the banknotes.

